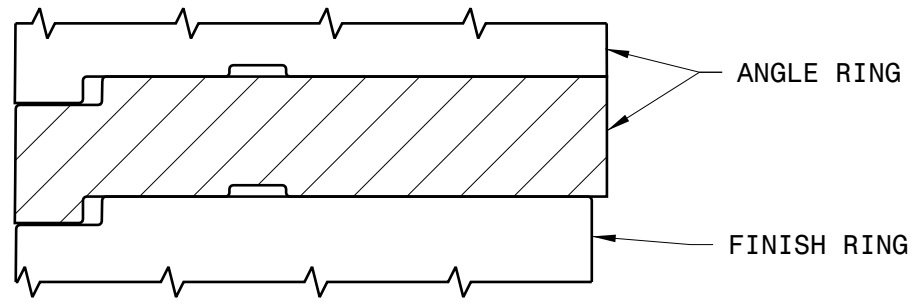


| ANGLE RINGS | | | | |
|-------------|-----------------|-----------------|------|------|
| PART NUMBER | OUTER DIA (IN.) | INNER DIA (IN.) | H1 | H2 |
| 36-24A-100 | 36 | 24 | 1.75 | 0.75 |

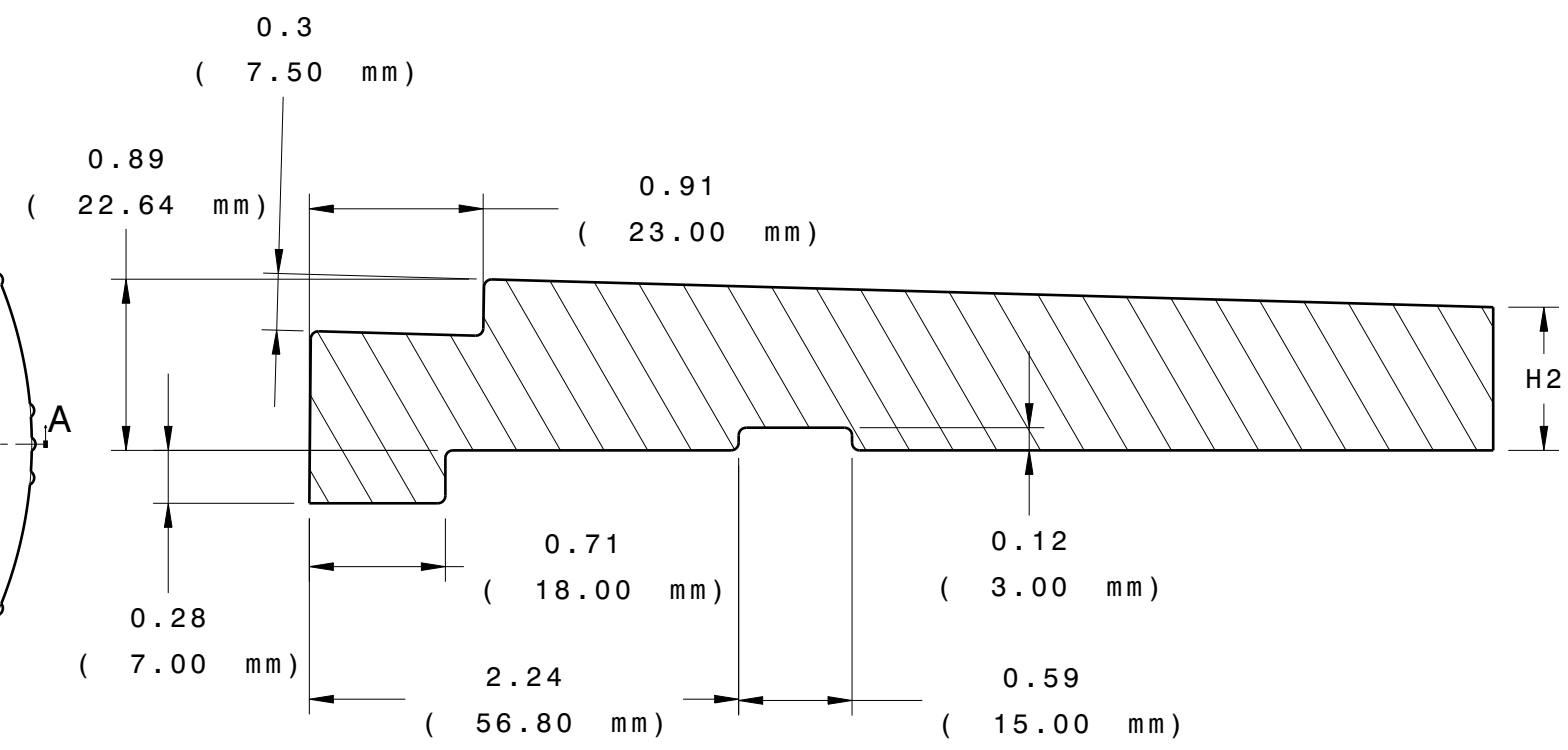
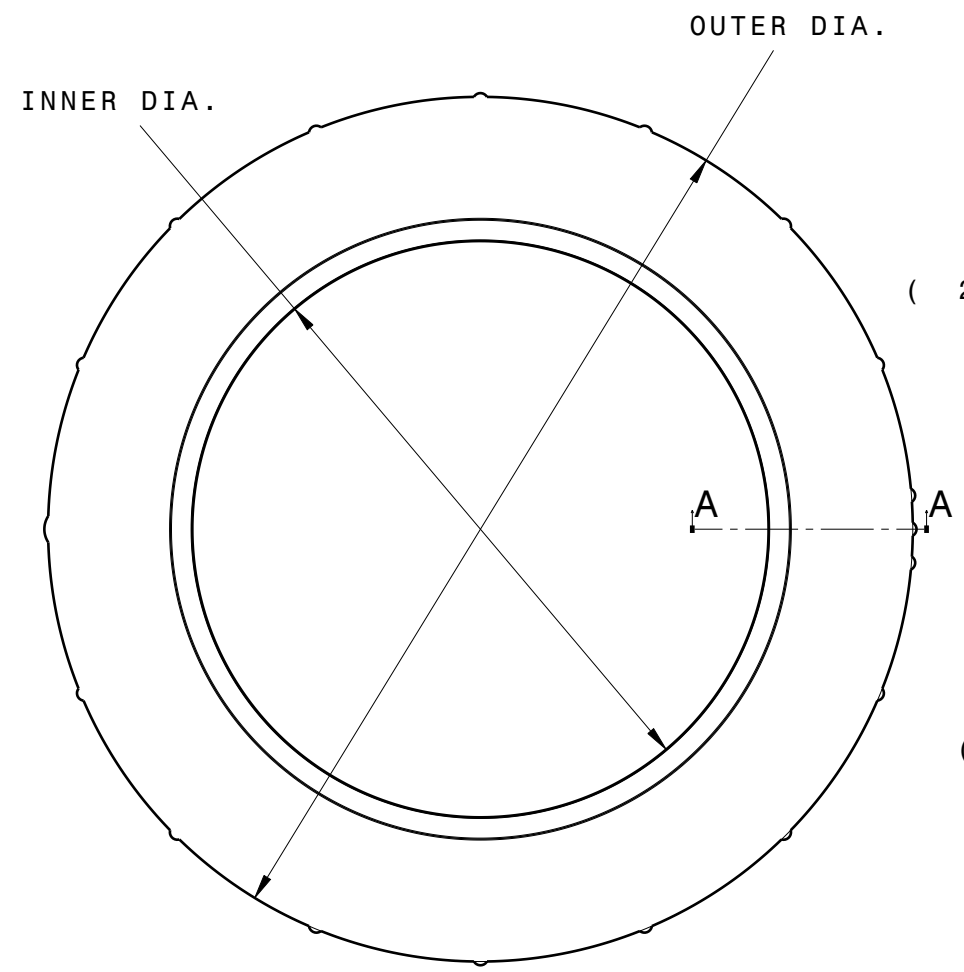


MANHOLE ADJUSTMENT SYSTEM

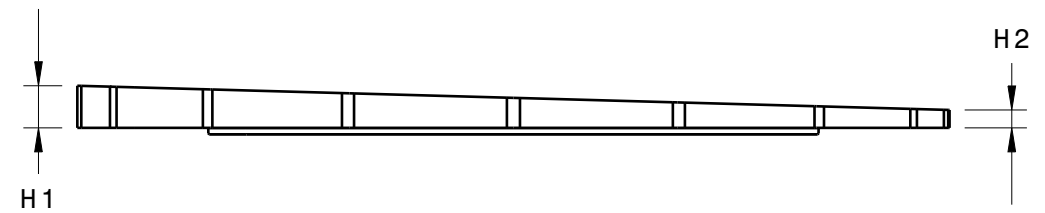
www.cretexseals.com



Section Mating Components



Section cut A-A



36 SERIES ANGLE RING

LOAD RATING
HEAVY DUTY

MATERIAL SPECIFICATION
**ARPRO EXPANDED
POLYPROPYLENE BLACK
5000 SERIES
ASTM-D3575**

| | |
|--------------|------------------|
| LAST REVISED | DATE |
| RAD | 14JAN2010 |